

# HWH SPACEMAKER SLIDE-OUT MECHANISM

## “UNIVERSAL STRAIGHT-OUT (USO)” MECHANISM *with*

### DUAL-CYLINDERS | 3" WIDE CHANNEL | SYNCHRONIZING CYLINDER

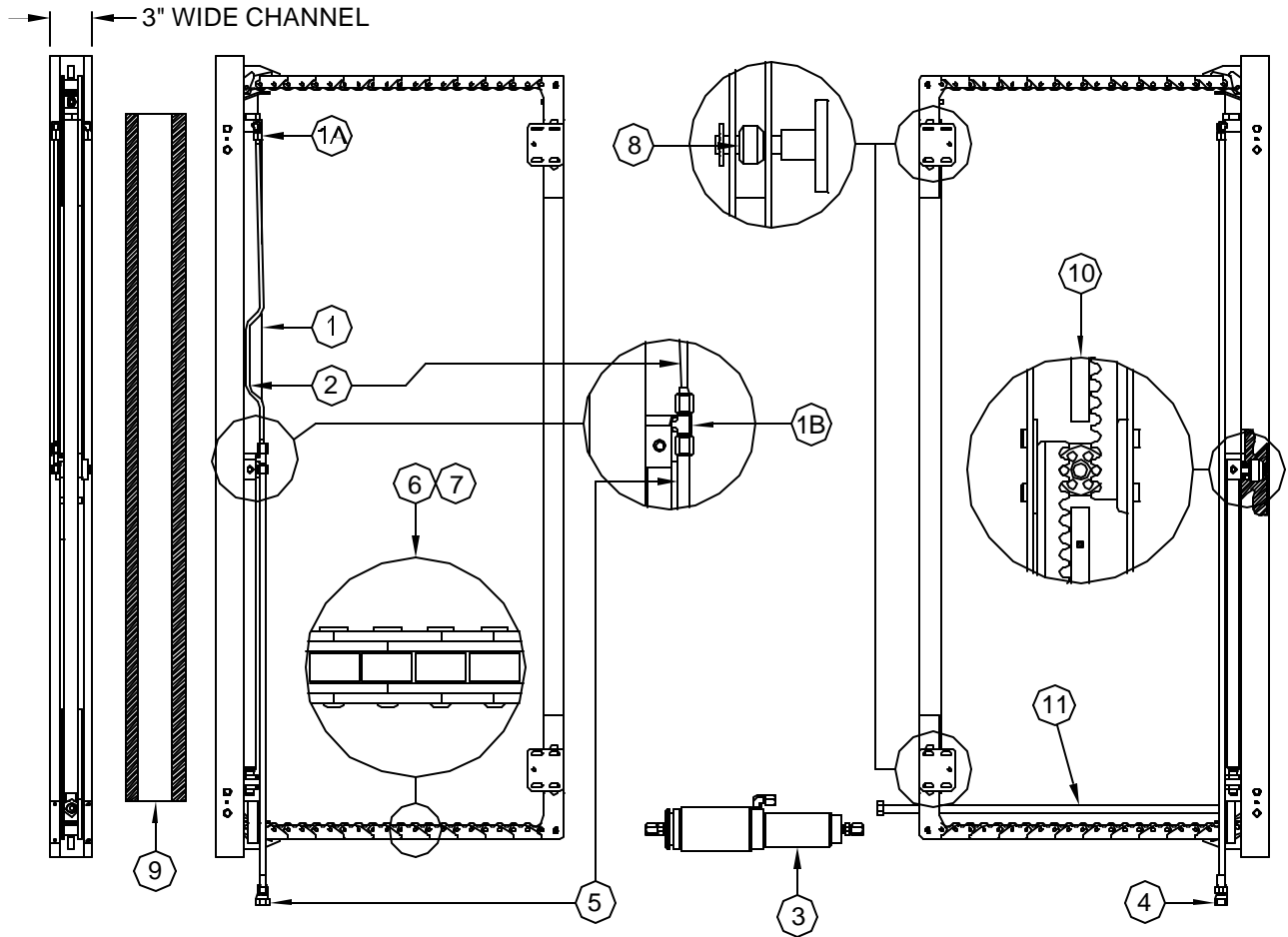
(File: MR41.2685.DOC | Revised: 22MAY17)

> [PrintFriendly PDF File](#)

The diagrams below represent the **BASE MODEL SLIDE-OUT MECHANISM** as described above.

The information on this page is similar in all adaptations of the base model.

\* Slide-out parts that have been adapted to OEM specifications can be found in the **OEM-Specific Parts Guide** > [MR40.HTML](#).



ITEM	ORDER#	QTY	DESCRIPTION
1*			CYLINDER ASSY
1A	RF1453	1	90 DEG. MALE ELBOW
1B	RF90151	1	MALE BRANCH T
2*			STEEL TUBE ASSEMBLY
3*			SYNC CYLINDER
4*			HOSE ASSY or STEEL
			TUBE ASSY (Cap End)
5*			HOSE ASSY or STEEL
			TUBE ASSY (Rod End)
6	OBS	1	ROLLER CHAIN REPAIR (Must purchase complete chain assembly.)

ITEM	ORDER#	QTY	DESCRIPTION
7	OBS	1	LINK & ROLLER CHAIN REPAIR (Must purchase complete chain assembly.)
8	RAP92091	1	ROLLER REPAIR 1.23 DIA
		1	ROLLER
		1	RETAINER CLIP
9	RAP92550		VINYL COVER ASSEMBLY
10	RX93148	1	PINION KIT FOR RACK ASSEMBLY (For replacement info. on all other rack related items, contact HWH.)
11	RAP92464	1	MANUAL RETRACT SCREW 40"

**NOTE:** INDENTED ITEMS INCLUDED WITH PRECEDING ITEM.