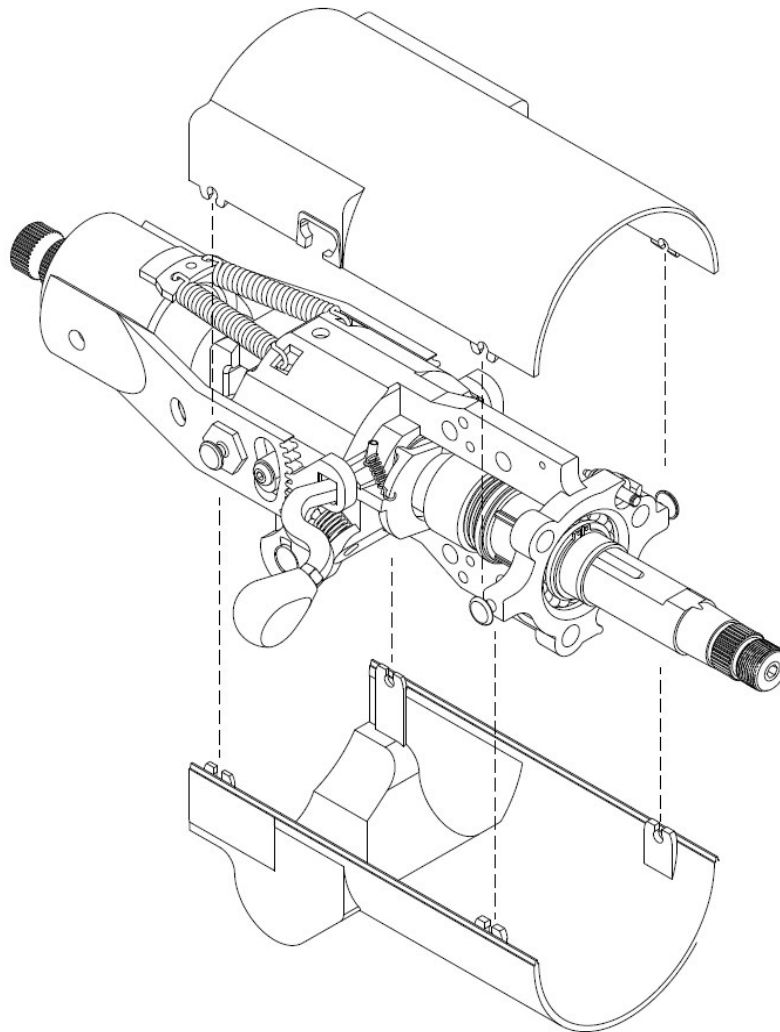


## **Turn Signal Replacement Instruction**

### **Removal**

Step 1)

Telescope the column all the way out and remove the upper and lower covers (Snapped onto column).

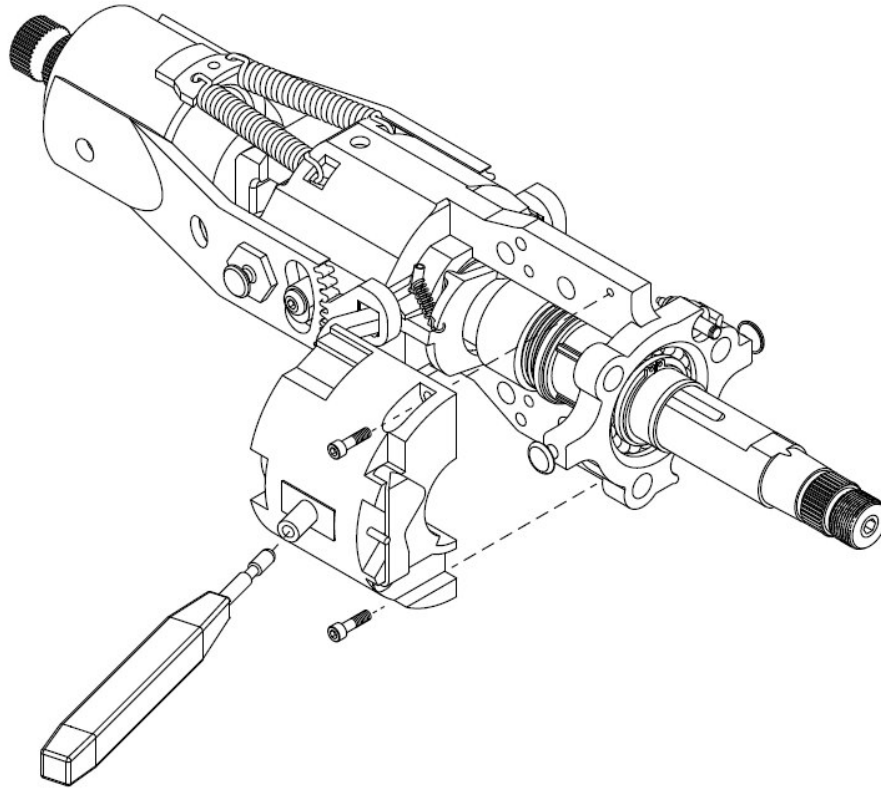


**Figure 1: Upper/Lower Cover removal**

Step 2)

Remove the turn signal switch lever by pulling straight out.

- Step 3) Remove the turn signal switch by removing the two screws



**Figure 2: Turn signal switch removal**

- Step 4) Carefully lift the snap tabs (4 places) on the harness connector and remove the wire harness from the back of the turn signal switch.

### **Replacement**

- Step 1) Snap in the harness connector to the new switch. Make sure the connector is fully engaged and the snap tabs are fully seated.
- Step 2) Place the switch back against the housing and align the screw holes. Install the screws and torque to 4 - 4.5 N\*m (35.4 – 39.8 lb\*in)
- Step 3) Re-install the turn signal switch lever. Make sure the lever is fully seated and snapped into location.
- Step 4) Re-install the upper and lower covers

## **CRITICAL CHECKING PROCEDURE**

- 1.) Tilt and Telescope the Column to ensure the Column still functions properly.  
NOTE: Some Models Only Tilt. They won't Telescope.
- 2.) Check to make sure that all the turn signal functions are functioning properly.
- 3.) Apply the hazard lights and verify that the service brakes lights override the flashing hazard function.
- 4.) Turn the Steering Wheel from full left to full right, lock to lock, to ensure the Column rotates freely. While rotating the Steering Wheel, feel for any catches, binding or any other abnormalities.

NOTE: If there are any abnormalities felt as the Steering Wheel is turned. Follow the Manufacturer's removal and replacement procedures to remove the Steering Column and replace it with a new one. **DO NOT** attempt to drive the vehicle with the malfunctioning Steering Column in it!

N	050206	AK	PG	Release to Service
Rev. Let.	Date	Signature	Approval	Description